

DISRUPTING PERIPHERAL ARTERIAL THROMBECTOMY

The Impact of the Pounce™ Thrombectomy System: A Multispecialty Perspective.

Sponsored by  SURMODICS

Overview of the Pounce™ Thrombectomy System

The Pounce™ System is designed to remove acute-to-chronic thrombi and emboli in peripheral arteries throughout the body. No capital equipment, no aspiration, reduced need for lytics—just grab, go, restore flow.



3.5mm–6mm vessel diameter

Ideal for removal of femoral-popliteal, upper extremity, mesenteric, and other peripheral arterial thrombi and emboli

Pounce™ Thrombectomy System

Model Number	PTS-0607-7F135
Sheath Compatibility	≥ 7 Fr
Guidewire Compatibility	0.035" (0.889 mm)
Working Length	135 cm
Basket Diameter	6 mm
Funnel Diameter	7 mm

Pounce™ LP Thrombectomy System

Model Number	PTS-0407-7F150
Sheath Compatibility	≥ 7 Fr
Guidewire Compatibility	0.018" (0.457 mm)
Working Length	150 cm
Basket Diameter	4 mm
Funnel Diameter	7 mm



2mm–4mm vessel diameter

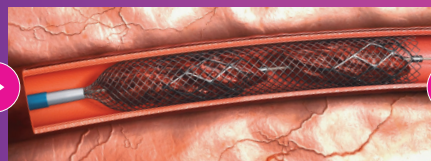
Ideal for removal of below-the-knee arterial thrombi and emboli

How it works

Scan to watch full animation.
qrco.de/poucesystemanimation



The basket wire is delivered distal to the location of the thrombus, deploying two nitinol self-expanding baskets.



The baskets capture the clot and are retracted into a nitinol collection funnel.



With the clot entrained, the system is retracted into a minimum 7 Fr guide sheath through which the clot is withdrawn and removed from the body.